



Mober



01010111010001010111010101111101010100101110100010101010101010101

01010111010100101

01010111010001010111010101

100010101110101011111010101

111010001010111010101111010101010111010001010101010101010101

100010101110101011111010101

01010111010100101



serie series

roller 110 E/6M

dal 1959 termosaldatrici automatiche per film plastici



roller

nastrosac

gamma

delta

wrapp

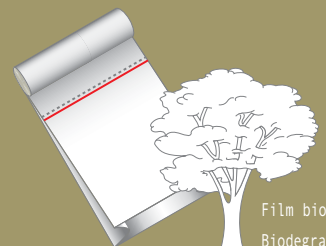
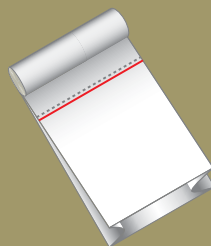
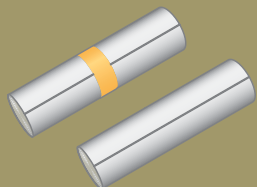
110 E/6M



Opzionali a richiesta  
Optionals on demand

ITA Linea per la produzione in 2 o 3 piste di sacchi a bocca aperta con pretaglio per lo strappo. Confezione: in rotoli nastrati con fascetta di carta. Speciale sistema movimentazione film anti stiramento saldature progettato per film anche molto sottili. Arrotolatore automatico a 6 mandrini.

GB Line for the production on 2 or 3 tracks of pre-cut bottom welded bags for tearing. Packing: rolls with paper tape. Special system of film movement to obtain a perfect sealing. Projected even for very thin film. Automatic winding unit with 6 mandrels.



Film biodegradabile  
Biodegradable film

serie  
series

roller 110 E/6M

since 1959 automatic bag-making machines for plastic film

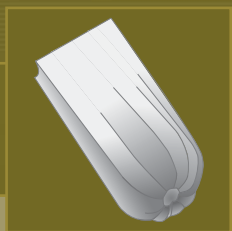
01011111010101  
 11010101  
 010111010001010101010101010101



01010111010100101001011010101110101011  
 010101110100010101110101011110101010010111010001010101010110101  
 010101110101010101  
 100010101110101011111010101  
 00101011010101111010101

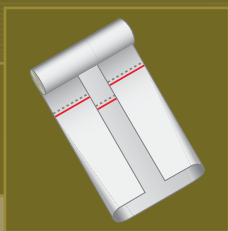
OP 13.1:

Apparecchiatura per sacchi con fondo a stella.  
 Device for star-sealing bags.



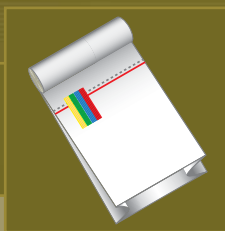
OP 13:

Piegatore a "C".  
 "C" folding unit.



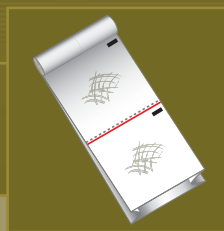
OP 5:

Inserimento laccetti.  
 Device for the insertion of metal strip.



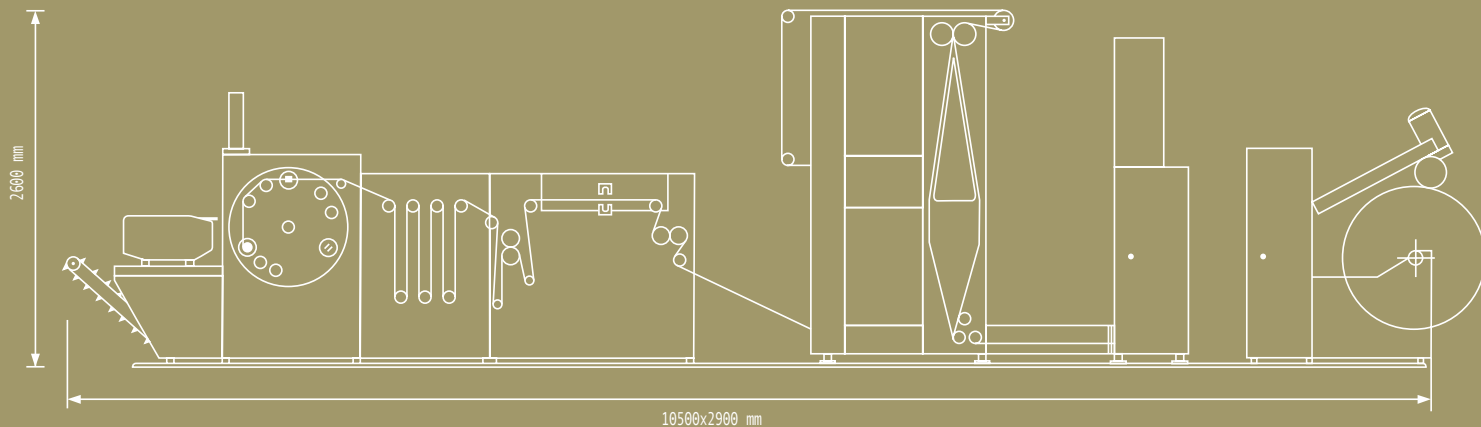
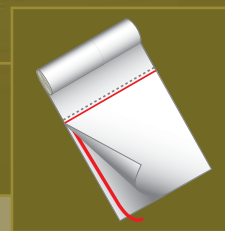
OP 3:

Apparecchiatura per sacchi con stampa a registro.  
 Device for printed film.



OP 6:

Apparecchiatura per inserimento rafia.  
 Device for the insertion of raffia.



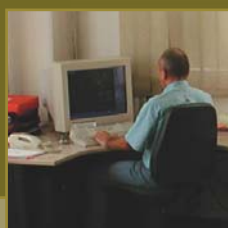


roller 110 E/6M

larghezza utile di saldatura max. bag width	1100 mm
lunghezza minima sacco min. bag length	250 mm
lunghezza massima sacco max. bag length	1500 mm
spessore minimo film min. film thickness	HDPE 0.010 mm
spessore massimo film max. film thickness	LDPE 0.060 mm
velocità meccanica massima max. mechanical speed	250 cycles/min
velocità film massima max. film speed	150 metres/min
diametro massimo rotolo max. roll diameter	110 mm
larghezza massima rotolo 2 piste max. roll width 2 tracks	420 mm
larghezza massima rotolo 3 piste max. roll width 3 tracks	300 mm
potenza totale assorbita total absorbed power	16 kw
consumo aria compressa compressed air consumption	300 lt/min

Le illustrazioni e le caratteristiche tecniche del presente catalogo sono informative e non impegnative. The illustrations and technical specifications in this catalogue are provided as general information and are not binding.

Progettazione interna  
Internal planning



Costruzione  
Construction



Collaudo  
Test



Assistenza  
Customer service



internal planning, construction, test, customer service



serie series  
roller 110 E/6M